




Ceiling Cassette Series **R410A**

The CoolLight logo features a stylized blue starburst icon above the word "CoolLight" in a bold, black, sans-serif font, with a blue swoosh underline.



Product Line Up

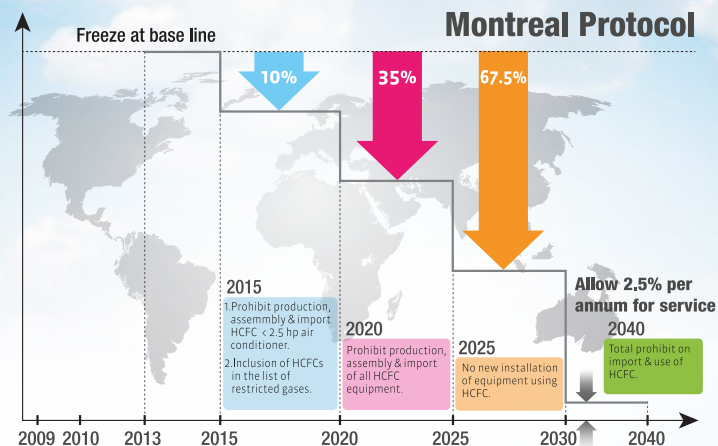
Ceiling Cassette Series

		Indoor Model	Outdoor Model	Capacity Range
TYPE OF REFRIGERANT	R410A	 FFN10/15CV1	 RN10/15FV1	1.0 - 1.5 hp
		 FCN20/25/30/35/40/50FV1 *Panel: BCFL2B5	 RN20/25CV1	2.0 - 5.0 hp
		 FCN20/25/30/35/40/50FV1 *Panel : BCFG1	 RN28/30CV1  RN35DV1 RN40-50DY1	

Refrigerant Alternative

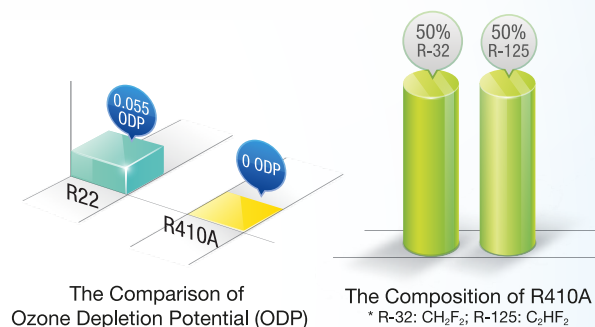
Regulation

- According to Montreal Protocol, R22 will be gradually phased-out.
- In Malaysia, Department of Environment (DOE) has implemented HCFC Phase Out Management Plan (HPMP).
- For R22 air-conditioners, 25,000 btu/hr and below, will be phased out by year 2015.



R410A: The Ozone-Friendly Refrigerant

- R410A as an alternative to R22 refrigerant because it is an ozone-friendly refrigerant.
- R410A refrigerant has no chlorine content which do not contribute to the depletion of the ozone layer.
- R410A is of zero ozone depletion potential (ODP=0).
- The lower the ODP value, the better environmental performance.



Product Features



Technology

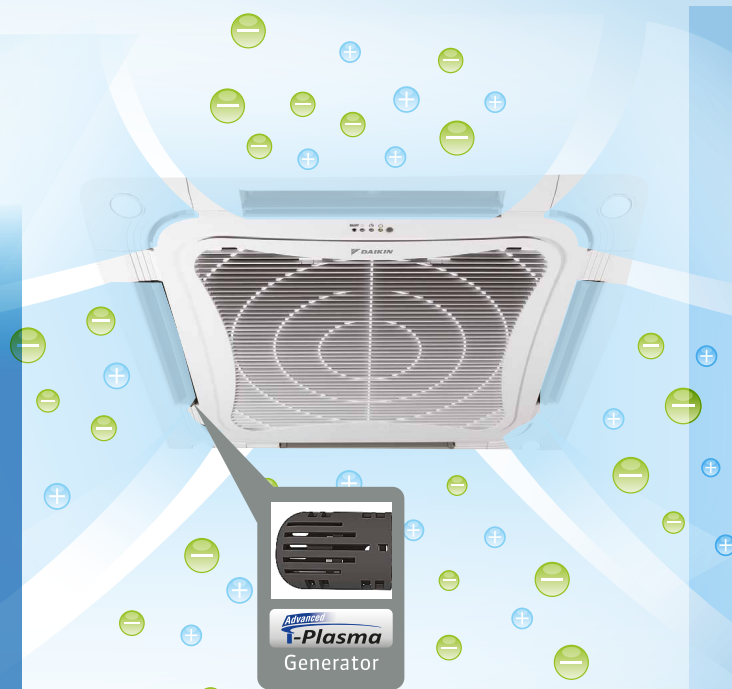
High effectively to deactivate bacteria by damaging those microbial DNA and their surface structures by this advanced plasma technology.

It emits massive positive and negative ions, and sterilize surrounding air with more effectively. FCN-F series emit 100 times more ions than ionizer technology in the current market by using our advance i-plasma technology.

Daikin FCN-F series ensures a clean and healthy environment lifestyle for you and your family.

Emit 100x more ions*
than Ionizer technology.

*positive + negative ions



Product Features

Inspired by nature

Elegant Design Panel

Inspired by Nature. Combining with “butterfly” concept into modern ceiling cassette panel design to provide user a totally different outlook which match into current living lifestyle.



Cassette Panel



Intake Grille



Daikin Ceiling Cassette F Series has won Malaysia Good Design Award 2015 in recognition of product design excellence, innovation and creativity.



Innovative CoolLight™ Function

* Applicable for FCN-F with BCFL2B5 Panel only

- First in Malaysia market.
- A revolutionary concept which provides cooling comfort with illumination in style.
- Comes with energy saving LED downlights at 4 corners.
- With power supply, lights be turned on/off with remote controller without switching on the air-conditioner unit.

Product Features

Exclusive Surround Air Flow

* Applicable for FCN-F series only.

Surround air flow feature provides an even air distribution and remarkably fast cooling to the entire area.



Compact and Easy-To-Use Controller

* Applicable for FFN-C and FCN-F with BCFG1 Panel only.

- Prominent temperature display.
- Real-time clock display.
- Easily accessible buttons.



DGS01 Wireless Controller



BRC52B65 Wireless Controller

* Applicable for FCN-F with BCFL2B5 Panel only

- Additional LED lighting ON/OFF button.

High Efficiency Hydrophilic Fin

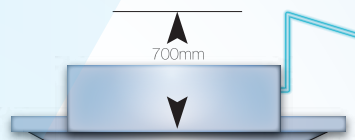
The hydrophilic coated fin ensures the condensate water moves easily to the drain pan thus enhancing the cleanliness and lifespan of the cooling coil.

Built-in-Starter (BIS)

Protect air conditioner from overcurrent condition that may cause system failure. This will prolong the unit's lifespan as the unit will be protected from overcurrent. (1-2.5HP only)

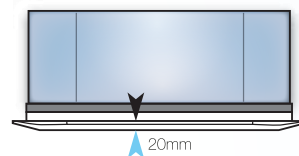
Built-in High Head Drain Pump

The unit comes with a built-in high head drain pump up to 700mm. A safety float is incorporated in the drain pump to monitor its water level.



Elegantly Designed Panel

The slim panel can be blended into any decoration and design.



Slim Wired Controller (Optional)

The unit also offers an optional wired controller upon your special requirement.

* Not applicable for CoolLight Series

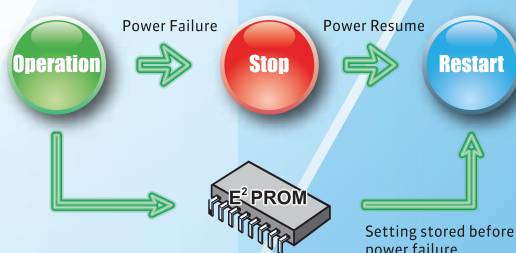
- Dedicated buttons for Quiet and Turbo functions.
- Key lock function.
- Real-time timer. (7 days option, 2 events daily)



DSLM8 Wired Controller

Auto Random Restart

In the event of a sudden power failure during operation, unit can be automatically restarted (subject to certain protection conditions) from last setting condition. This eliminates the need to restart manually after each power failure.





FFN10/15CV1

FCN20/25/30/35/40/50FV1
*Panel: BCFL2B5FCN20/25/30/35/40/50FV1
*Panel : BCFG1

Specifications



R410A

MODEL	INDOOR UNIT		FFN10CV1	FFN15CV1
	OUTDOOR UNIT		RN10FV1	RN15FV1
TOTAL COOLING CAPACITY		Btu/hr	9,500	12,500
		kW	2.78	3.66
INPUT POWER		W	950	1,250
RUNNING CURRENT, 1Ø[3Ø]		A	4.26	5.60
EER		Btu/hr/W /W/W	10.00 / 2.93	10.00 / 2.93
POWER SOURCE		V/Ph/Hz	220-240 / 1 / 50	
REFRIGERANT TYPE/CONTROL			R-410A / OUTDOOR CAP. TUBE	
AIR FLOW		CFM	410	
SOUND PRESSURE LEVEL	HIGH	dBA	41	41
	LOW		35	34
UNIT DIMENSION (WITH PANEL) (HxWxD)	INDOOR UNIT	mm	250 x 570 x 570 (295 x 640 x 640)	
	OUTDOOR UNIT		550 x 658 x 273	
UNIT WEIGHT	INDOOR UNIT (UNIT + PANEL)	kg	15.5 + 2	
	OUTDOOR UNIT		28	29
COPPER PIPE SIZE	LIQUID	mm/in	6.35 / 1/4	
	GAS	mm/in	9.52 / 3/8	12.7 / 1/2

MODEL			INDOOR UNIT		FCN20FV1	FCN25FV1	FCN30FV1		FCN35FV1	FCN40FV1	FCN50FV1
			OUTDOOR UNIT		RN20CV1	RN25CV1	RN28CV1	RN30CV1	RN35DV1	RN40DY1	RN50DY1
TOTAL COOLING CAPACITY			Btu/hr	18,500	23,000	28,000	30,000	36,000	42,000	46,000	
			kW	5.42	6.74	8.21	8.79	10.55	12.31	13.50	
INPUT POWER			W	1,760	2,050	2,836	2,930	3,770	4,110	4,918	
RUNNING CURRENT, 1Ø[3Ø]			A	7.75	9.09	13.30	13.6	16.7	[6.57]	[8.53]	
EER			Btu/hr/W /W/W	10.51 / 3.08	11.23 / 3.29	9.87 / 2.89	10.24 / 3.00	9.55 / 2.80	10.24 / 3.00	9.38 / 2.75	
POWER SOURCE			V/Ph/Hz	220-240 / 1 / 50					380-415 / 3 / 50		
REFRIGERANT TYPE AND CONTROL				R410A / Outdoor Cap.Tube							
AIR FLOW			CFM	730	840	890		1030	1120	1120	
SOUND PRESSURE LEVEL	HIGH	dBA	38	39	41		46	48	48		
	LOW		33	34	35		37	41	41		
UNIT DIMENSION (WITH PANEL) (HXWXD)	INDOOR UNIT	mm	246 x 840 x 840 (305 x 950 x 950)					288 x 840 x 840 (347 x 950 x 950)			
	OUTDOOR UNIT		654 x 855 x 328			756 x 855 x 328		852 x 1,030 x 400			
UNIT WEIGHT	INDOOR UNIT (UNIT + PANEL)	kg	22 + 5					25 + 5		29 + 5	
	OUTDOOR UNIT		43	47	57		71	95	98		
PIPE CONNECTION	SIZE	LIQUID	mm	6.35 / 1/4			9.52 / 3/8				
		GAS	mm	12.7 / 1/2	15.88 / 5/8						

1) DUE TO OUR POLICY OF INNOVATION, ALL SPECIFICATIONS ARE SUBJECTED TO CHANGE BY THE MANUFACTURER WITHOUT PRIOR NOTICE.

2) ALL UNITS ARE BEING TESTED AND COMPLY TO ISO 5151.

3) NOMINAL COOLING CAPACITY ARE BASED ON THE CONDITIONS BELOW :

COOLING 27°C DB / 19°C WB INDOOR AND 35°C DB OUTDOOR.

4) SOUND PRESSURES LEVEL ARE MEASURED IN DAIKIN R&D SOUND ROOM.

www.daikin.com.my

DAIKIN MALAYSIA SALES & SERVICE SDN. BHD.

(Formerly known as Group Associated (C & L) Sdn. Bhd.)

(109719-M)

Head Office Tel: 03-7953 8388 Fax: 03-7956 4371

Email: sales_enquiry@daikin.com.my, customer_service@daikin.com.my

Branches:

- Kedah
- Penang
- Perak
- Negeri Sembilan
- Melaka

Tel: 04-730 5670
Tel: 04-331 1670
Tel: 05-548 2307
Tel: 06-768 8969
Tel: 06-288 1133

- Johor
- Pahang
- Kelantan
- Sabah
- Sarawak

Tel: 07-557 7788
Tel: 09-567 6778
Tel: 09-747 4578
Tel: 088-722 194
Tel: 082-333 299

Authorized dealer: