

inverter Energy Saving

ACSON[®]
International
Air Conditioners

好冷爽!
Syoknya!



Signature S
WALL MOUNTED

Signature S

WALL MOUNTED

The first of its kind, the new Acson Wall Mounted Signature S is technologically advance with PLUSMA technology and yet having extensive human factors. With the changeable outlooks, the upbeat urban lifestyle of socialite is fulfilled with wide selections of skin or even with customized design to dress up your Acson air conditioner. Gone were the days of white conventional air conditioner.



Acson Wall Mounted Signature S has won the **Malaysia Good Design Award 2015** in recognition of excellence in product design, innovation and creativity.

SIRIM Certified :



IQNet & Sirim ISO 9001-2008



Sirim QAS ISO 9001-2008

✔ Deodorize, Sterilize, Purify

Acson PLUSMA utilizes cold plasma technology where massive positive and negative ions are produced. PLUSMA will deodorize, sterilize and purify air to give a fresher, healthier and more refreshing environment for better health and sustainability lifestyle. A PLUS for your health.



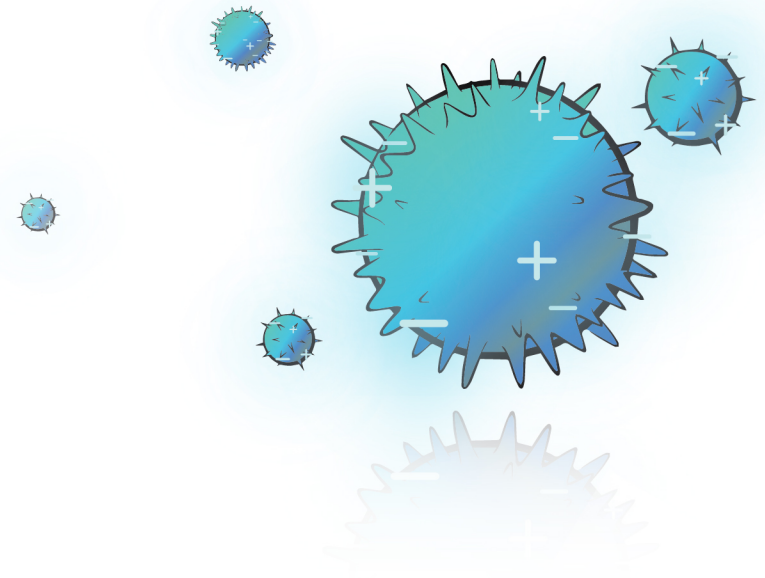
✔ Silent Atmosphere

QUIET MODE lowers the noise level by changing the frequency and fan speed of the unit. When serenity and tranquility state is desired, it will bring down the sound level to an unobstructive 25dBA. This function is perfectly convenient during the night.



✔ Fast Cooling Turbo Mode

On a hot day, you might wish your room cool faster. TURBO MODE enables the compressor fan to operate at its maximum fan speed for 20 minutes and cools the room 33% faster.



4 mins 5°C down
* Cooling capacity: 12,000 BTU/h, from 30°C

✓ Triple Protection

Built In Starter

Starter is built in internally unit lifespan and to protect the unit in a rare malfunctioning of the highly durable parts.

Automatic Restart

In the event of a sudden power failure, the unit can be automatically restarted once the power supply is back to normal and keeping the last setting condition.

Self Diagnosis System

With a series of sensors and intelligent control board, errors will be detected and blinking LEDs to show the error which rarely happen.



Optional Add Ons : Compatible with drainage pump

Easy and flexible installation with Easi-Flo Series drainage pump. To solve drainage of air-conditioner condensate water and long existed problem.



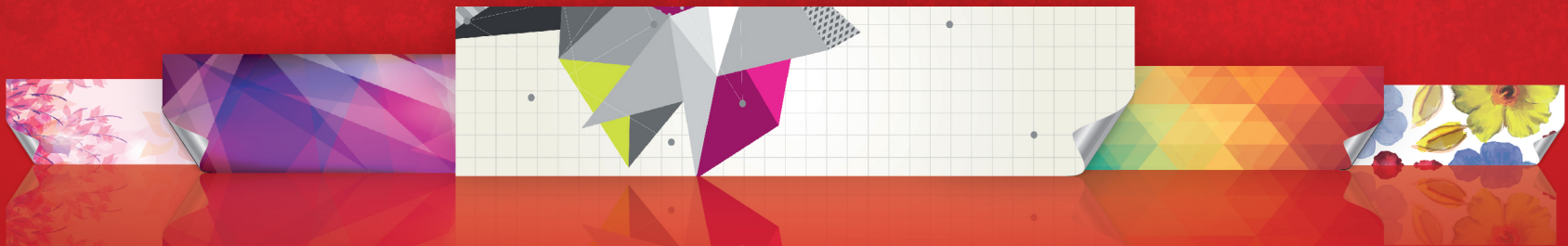
personalized^{skin}

Suits your every moment



Acson Wall Mounted Signature S is able to change its appearance according to your preference. We have a wide selections of skin or even personalized design to dress up your Acson air conditioner.

▼ Variable skin designs





❄️ Cooling Capacity: 1.0 - 2.5hp

Features :

ECOcool
Eco Friendly Product Series

personalized
shut

PLUSMA
Deodorize! Sterilize! Purify!

Achievement :

Malaysia
Good design

R410A Non-Inverter Signature S

▼ SPECIFICATIONS

Model			Indoor	A5WM 10S	A5WM 15S	A5WM 20S	A5WM 25S	A5WM 25S
			Outdoor	A5LC 10F	A5LC 15F	A5LC 20C	A5LC 25C	A5LC 25C1
Nominal Cooling Capacity			BTU/h	9,500	12,000	18,000	22,000	24,000
			W	2,780	3,520	5,280	6,450	7,030
Nominal Total Input Power			W	870	1,105	1,835	2,060	2,140
Nominal Running Current			A	3.86	4.94	8.10	9.14	9.32
EER			BTU/h/W	10.92	10.86	9.81	10.68	11.21
			W/W	3.20	3.18	2.87	3.13	3.29
Power Source			V/Ph/Hz	220 - 240 / 1 / 50				
Refrigerant Control				OUTDOOR CAPILLARY TUBE				
Indoor Unit	Control	Operation		WIRELESS LCD REMOTE CONTROL				
		Air Discharge		AUTOMATIC LOUVER (UP & DOWN)				
	Air Flow	Turbo	I/s (CFM)	169 (358)	176 (372)	280 (594)	303 (641)	
		High	I/s (CFM)	161 (342)	168 (355)	251 (531)	290 (614)	
		Medium	I/s (CFM)	133 (282)	140 (298)	224 (474)	253 (537)	
		Low	I/s (CFM)	106 (225)	114 (242)	199 (422)	224 (474)	
		Quiet	I/s (CFM)	99 (209)	106 (225)	180 (381)	197 (418)	
	Sound Pressure Level		dBA	39/38/33/27/25	41/40/35/29/28	44/42/39/36/35	48 / 46 / 43 / 40 / 37	
	Unit Dimension	Height	mm (in)	288 (11.34)			310 (12.20)	
		Width	mm (in)	859 (33.82)			1,124 (44.25)	
		Depth	mm (in)	209 (8.23)			237 (9.33)	
	Packing Dimension	Height	mm (in)	367 (14.45)			400 (15.75)	
		Width	mm (in)	970 (38.19)			1,252 (49.29)	
		Depth	mm (in)	303 (11.93)			333 (13.11)	
	Unit Weight		kg (lb)	9 (19.84)			14 (30.86)	
	Condensate Drain Size		mm (in)	19.05 (0.75)				
Outdoor Unit	Air Flow		I/s (CFM)	438 (927)	390 (827)	675 (1,430)	755 (1,600)	829 (1,756)
	Sound Pressure Level		dBA	46	48	49	52	54
	Unit Dimension	Height	mm (in)	550 (21.65)			651 (25.63)	753 (29.65)
		Width	mm (in)	658 (25.91)			855 (33.66)	
		Depth	mm (in)	273 (10.75)			328 (12.91)	
	Packing Dimension	Height	mm (in)	580 (22.83)			693 (27.28)	793 (31.22)
		Width	mm (in)	775 (30.51)			990 (38.98)	
		Depth	mm (in)	355 (13.98)			415 (16.34)	
	Unit Weight		kg (lb)	28 (61.73)	29 (63.93)	43 (94.80)	47 (103.62)	57 (125.66)
	Pipe Connection	Type		FLARE VALVE				
Size		Gas	mm (in)	9.52 (0.63)	12.70 (0.63)		15.88 (0.75)	
		Liquid	mm (in)	6.35 (0.38)				
Refrigerant Type				R410A				

1. All specifications are subject to change by the manufacturer without prior notice.
2. Nominal Cooling Capacity is based in the conditions: Cooling 27°C DB / 19°C WB indoor and 35°C DB / 24°C WB outdoor
3. Sound Pressure Level is according to JIS B 8615 standard. Position of the measurement point is 1m in front and 1m below the unit.
4. Units are tested & complied to international standards such as ISO 5151 and AHRI 210/240.



❄️ Cooling Capacity: 1.0 - 2.5hp

Features :

ECOcool
Eco Friendly Product Series

personalized
skit

PLUSMA
Deodorize! Sterilize! Purify!

inverter Energy Saving

Achievement :

Malaysia
Good design

R410A Inverter Signature S

● SPECIFICATIONS

Model				Indoor	A5WMY 10S	A5WMY 15S	A5WMY 20S	A5WMY 25S
				Outdoor	A5LCY 10F	A5LCY 15F	A5LCY 20C	A5LCY 25C
Nominal Cooling Capacity (Min - Max)				BTU/h	9,100 (4,400 - 10,200)	12,100 (4,400 - 13,000)	18,500 (4,700 - 21,200)	21,500 (5,800 - 23,000)
				W	2,670 (1,290 - 2,990)	3,550 (1,290 - 3,810)	5,420 (1,400 - 6,210)	6,300 (1,700 - 6,740)
Nominal Total Input Power (Min - Max)				W	780 (280 - 990)	1,075 (290 - 1,390)	1,600 (295 - 2,050)	1,870 (300 - 2,000)
Nominal Running Current (Min - Max)				A	3.49 (1.61 - 5.38)	4.82 (1.67 - 6.51)	7.11 (1.52 - 9.02)	8.30 (1.56 - 8.83)
EER				BTU/h/W	11.67	11.26	11.56	11.50
				W/W	3.42	3.30	3.39	3.37
Power Source				V/Ph/Hz	220 - 240 / 1 / 50			
Refrigerant Control				OUTDOOR EXV				
MEP's Value				5 STARS				
Indoor Unit	Control	Operation		LCD REMOTE CONTROL				
		Air Discharge		AUTOMATIC LOUVER (UP & DOWN)				
	Air Flow	Turbo	I/s (CFM)	178 (378)	185 (392)	273 (578)	332 (703)	
		High	I/s (CFM)	163 (345)	169 (358)	250 (529)	309 (654)	
		Medium	I/s (CFM)	128 (272)	133 (282)	222 (471)	276 (585)	
		Low	I/s (CFM)	102 (215)	110 (232)	197 (418)	239 (507)	
		Quiet	I/s (CFM)	86 (182)	86 (182)	177 (374)	206 (437)	
	Sound Pressure Level	dBA		41 / 40 / 34 / 29 / 25	42 / 41 / 34 / 30 / 28	44 / 40 / 38 / 35 / 32	46 / 43 / 41 / 37 / 33	
	Unit Dimension	Height	mm (in)	288 (11.34)		310 (12.20)		
		Width	mm (in)	859 (33.82)		1,124 (44.25)		
		Depth	mm (in)	209 (8.23)		237 (9.33)		
	Packing Dimension	Height	mm (in)	367 (14.45)		400 (15.75)		
		Width	mm (in)	970 (38.19)		1,252 (49.29)		
		Depth	mm (in)	303 (11.93)		333 (13.11)		
	Unit Weight		kg (lb)	9 (19.84)		14 (30.86)		
	Condensate Drain Size		mm (in)	19.05 (0.75)				
Outdoor Unit	Air Flow		I/s (CFM)	425 (900)	345 (730)	798 (1,690)	848 (1,796)	
	Sound Pressure Level		dBA	45	46	51		
	Unit Dimension	Height	mm (in)	550 (21.65)		654 (25.75)	756 (29.76)	
		Width	mm (in)	658 (25.91)		855 (33.66)	855 (33.66)	
		Depth	mm (in)	273 (10.75)		328 (12.91)	328 (12.91)	
	Packing Dimension	Height	mm (in)	580 (22.83)		693 (27.28)	793 (31.22)	
		Width	mm (in)	775 (30.51)		990 (38.98)	990 (38.98)	
		Depth	mm (in)	355 (13.98)		415 (16.34)	415 (16.34)	
	Unit Weight		kg (lb)	24 (52.91)	26 (57.32)	37 (81.57)	44 (97.00)	
	Pipe Connection	Type	FLARE VALVE					
		Size	Gas	mm (in)	9.52 (3/8)	12.70 (1/2)		15.88 (5/8)
Liquid			mm (in)	6.35 (1/4)				
Refrigerant Type				R410A				

1. All specifications are subject to change by the manufacturer without prior notice.
2. Nominal Cooling Capacity is based in the conditions: Cooling 27°C DB / 19°C WB indoor and 35°C DB / 24°C WB outdoor
3. Sound Pressure Level is according to JIS B 8615 standard. Position of the measurement point is 1m in front and 1m below the unit.
4. Units are tested & complied to international standards such as ISO 5151 and AHRI 210/240.



CAT-A5WMS2-1601

Acson Malaysia Sales & Service Sdn Bhd (129688-D)

Lot 4, Lorong 19/1A, Seksyen 19, 46300 Petaling Jaya, Selangor Darul Ehsan, MALAYSIA.

Pilot Line : + 603 7964 8200 Customer Service Careline : + 603 7964 8388

Fax : + 603 7956 9907 / 9

Sabah : +6088 420 205

Penang : +604 537 7176 / 7

Kelantan : +609 773 3688

Sarawak : +6082 344 128

Melaka : +606 292 6196 / 7

Perak : +605 312 9828

Pahang : +609 517 8696 / 7 Johor : +607 355 1599 / 9331

www.acson.com.my

Authorized Dealer :

Products manufactured in an ISO certified facility.
This document contains the most current product information as of this printing.
For the most up-to-date product information, please logon to www.acson.com.my